

A stone wall with the text 'UNIVERSITY OF KENTUCKY' engraved on it. The wall is surrounded by lush greenery and colorful flowers. The sun is shining brightly in the upper left corner, creating a lens flare effect. The sky is blue with some clouds.

# UNIVERSITY OF KENTUCKY

**ACADEMIC OMBUD SERVICES**

**ANNUAL REPORT 2022-23**

 University of  
Kentucky  
An Equal Opportunity University

## Introduction

---

**The University of Kentucky Academic Ombud** provides an independent confidential space for students and instructors to receive informal advice and guidance regarding any academic issue they may be experiencing. The Academic Ombud Services staff helps resolve conflicts by thinking creatively about solutions, empowering students with the tools to solve problems, and mediating between faculty and students to facilitate respectful communication. Academic Ombud Services is open to all members of the UK academic community.





## Guiding principles

---

### 1. CONFIDENTIALITY

All conversations with Academic Ombud Services are entirely confidential, to the extent permitted by law, and the Academic Ombud does not disclose the identity of visitors or the content of conversations unless the parties involved give permission to share information.

### 2. NEUTRALITY

Academic Ombud Services does not advocate for students or faculty, but will facilitate the resolution of any issues that may arise, in a manner that is fair and equitable for all parties. The Academic Ombud Services staff will promote academic integrity, and advance honest and unbiased practices in the administration of university policies that affect faculty and students in the academic setting.

### 3. INDEPENDENCE

Academic Ombud Services is independent of all University colleges, instructional, and administrative offices and provides an annual summary report to the University Senate.

### 4. INFORMALITY

All meetings with Academic Ombud Services are informal and confidential. The process involves listening, exchanging information, identifying issues and a range of options, providing guidance and, if appropriate, facilitating resolution. The Academic Ombud cannot participate in a hearing or make binding decisions.

**Academic Ombud Services is committed to equity and justice for all members of the University community, and to providing a community in which every member is engaged, heard and valued.**

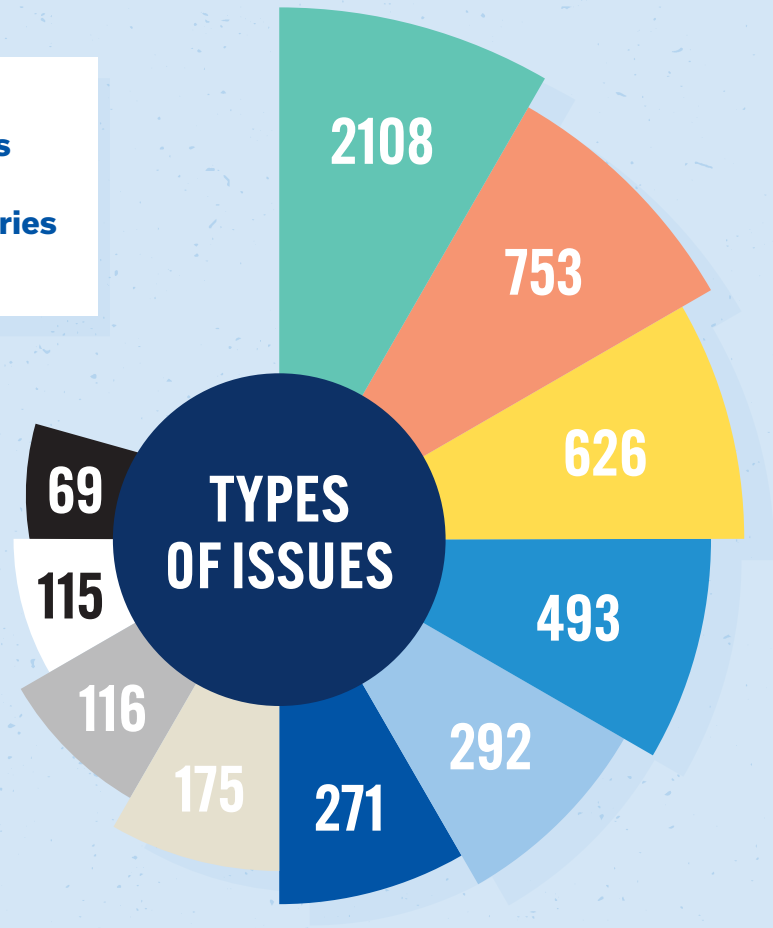
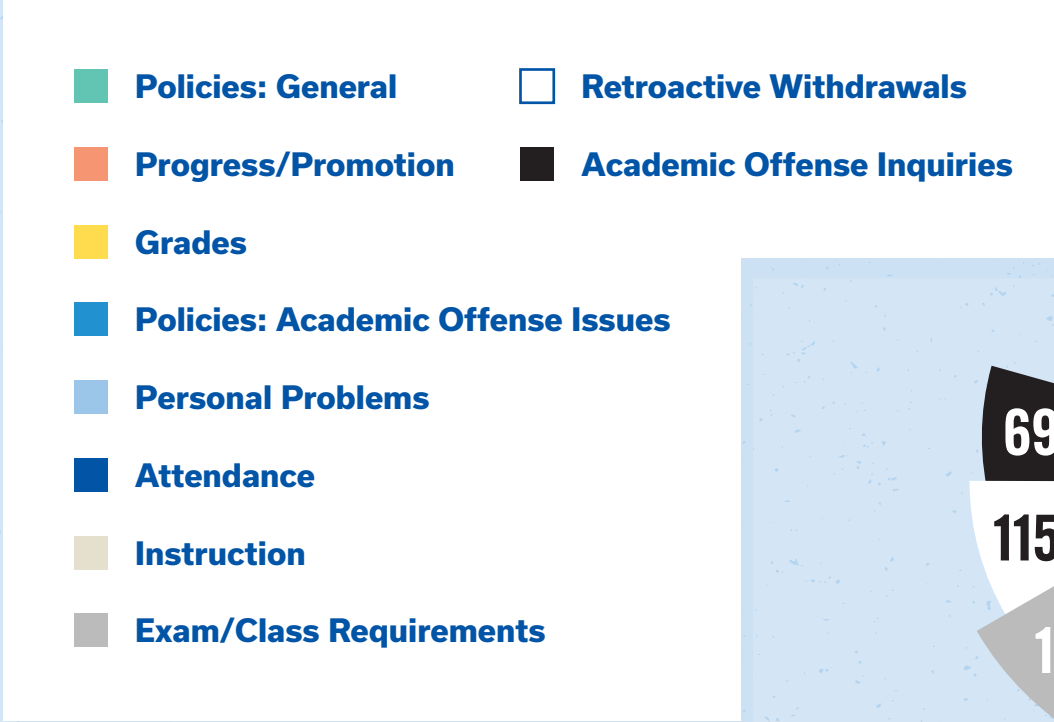


## 2022/23 Summary

Academic Ombud Services works with all types of academic issues at the University of Kentucky. The cases the Academic Ombud office has worked on in 2022-23 can be categorized as: (1) issues involving students' rights (Senate Rule 6.1), (2) those involving possible violations of academic integrity (Senate Rules 6.3 and 6.4), and (3) all other issues related to academic matters.

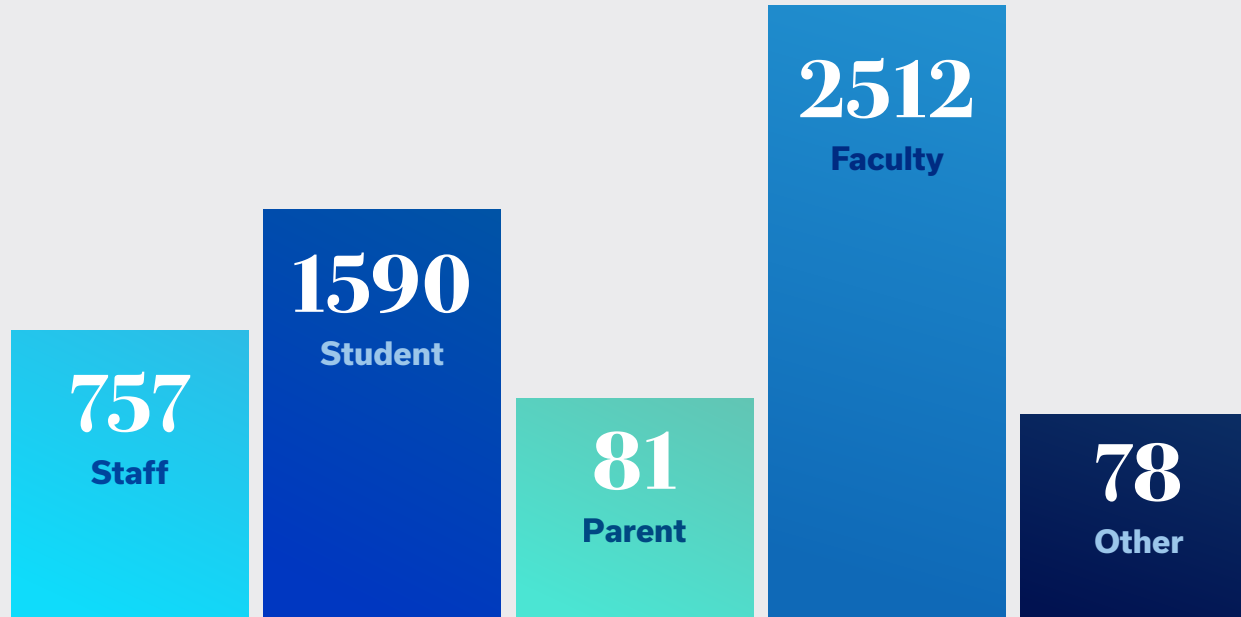
	2022/23	2021/22	2020/21	2019/20	2018/19
<b>Other Academic Issues</b>	<b>4554</b>	<b>2959</b>	<b>1845</b>	<b>2454</b>	<b>2239</b>
<b>Cases</b>	<b>464</b>	<b>273</b>	<b>199</b>	<b>142</b>	<b>204</b>
<b>Academic Offenses</b>	<b>169</b>	<b>102</b>	<b>178</b>	<b>106</b>	<b>173</b>
<b>Total</b>	<b>5187</b>	<b>3334</b>	<b>2222</b>	<b>2702</b>	<b>2616</b>

Five-year summary of the number of issues brought to Academic Ombud Services. Cases denote issues that required meeting(s) with the Academic Ombud.



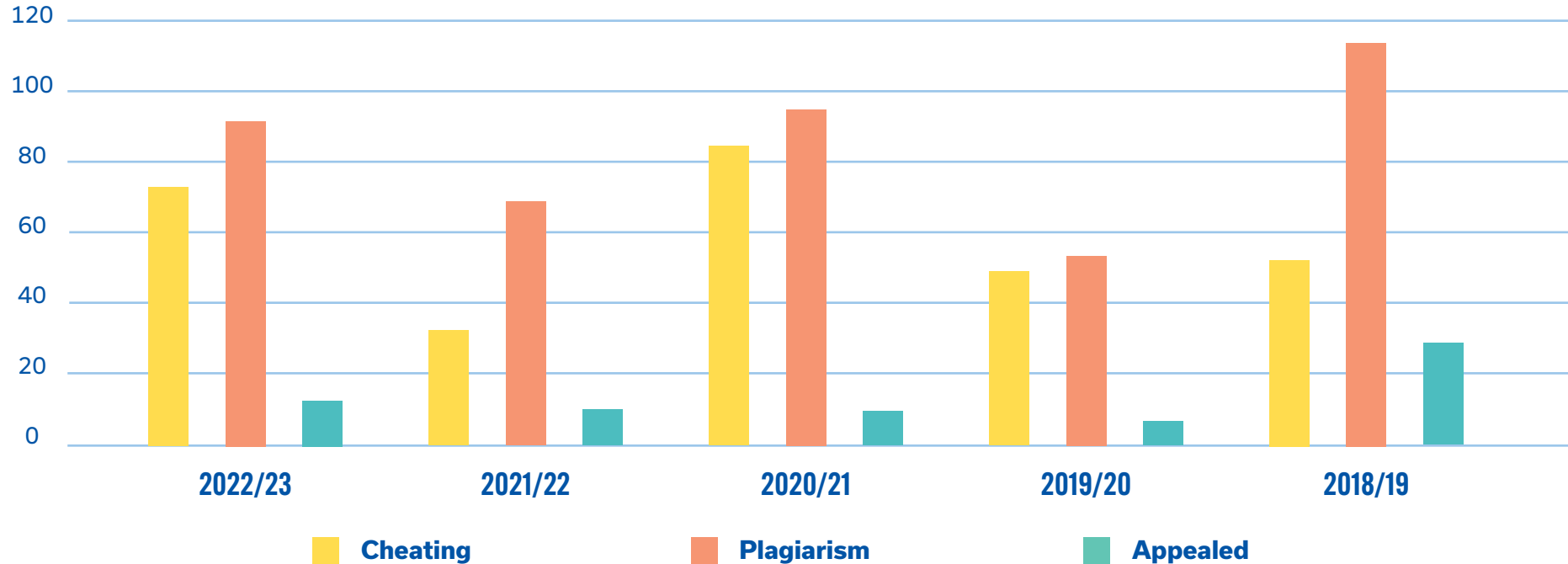
The types of academic issues addressed by Academic Ombud Services

## SOURCE OF ISSUES



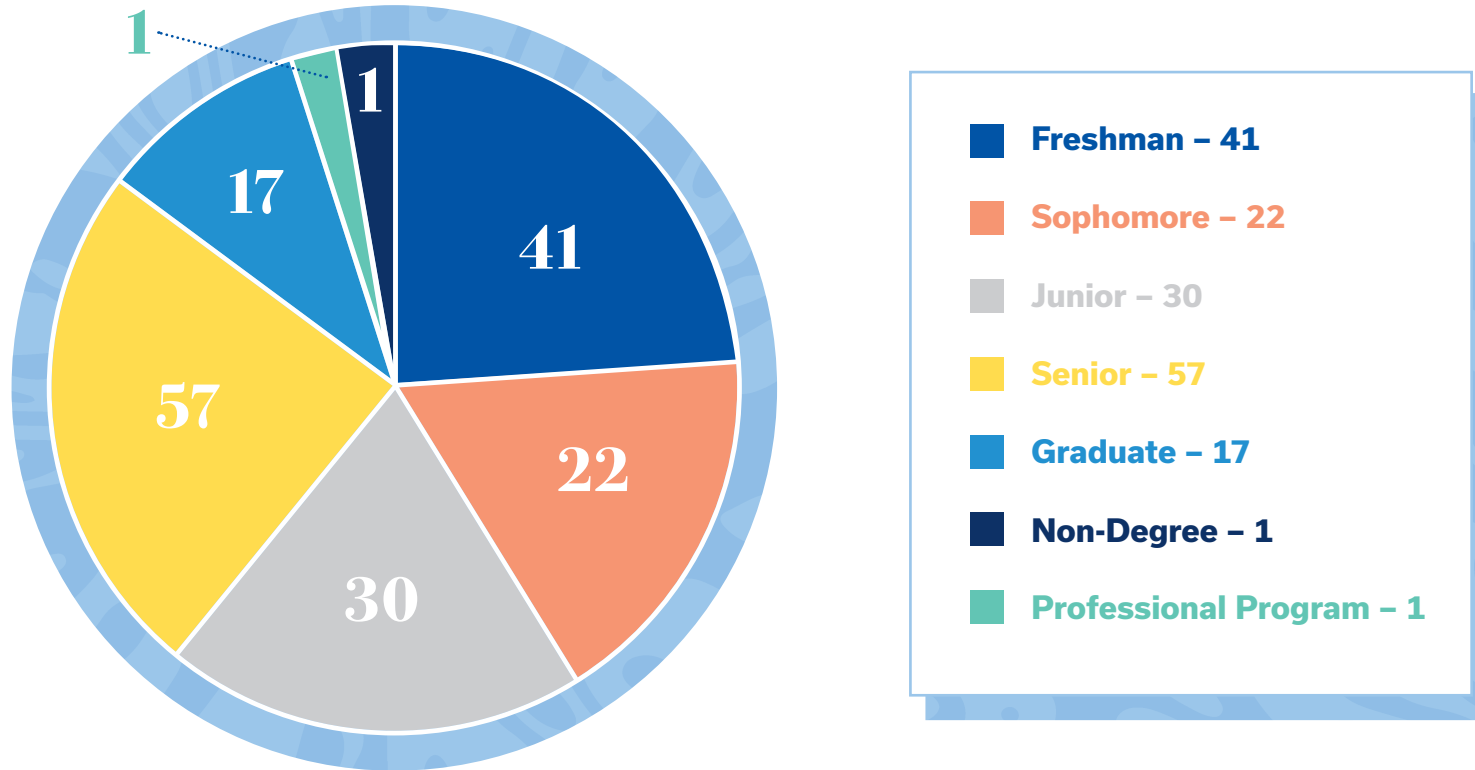
Academic Ombud Services addresses academic issues from students, faculty, staff, parents, and others, often former students.

# SUMMARY OF ACADEMIC OFFENSE DETERMINATIONS



Violations of academic integrity are forwarded by the college to Academic Ombud Services. If the student chooses not to appeal, the sanctions are forwarded to the Registrar.  
If the student decides to appeal, the case is processed and submitted to the University Appeals Board.

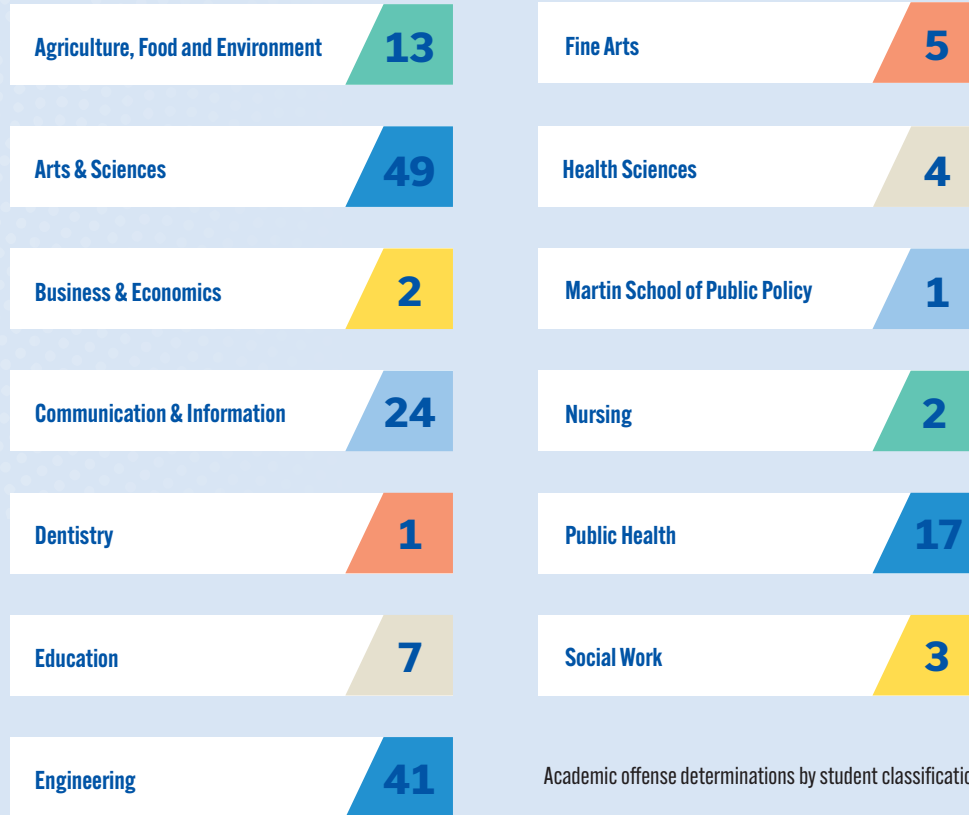
## ACADEMIC OFFENSE BY STUDENT CLASSIFICATION



Academic offense determinations by student classification



# ACADEMIC OFFENSE BY COLLEGE

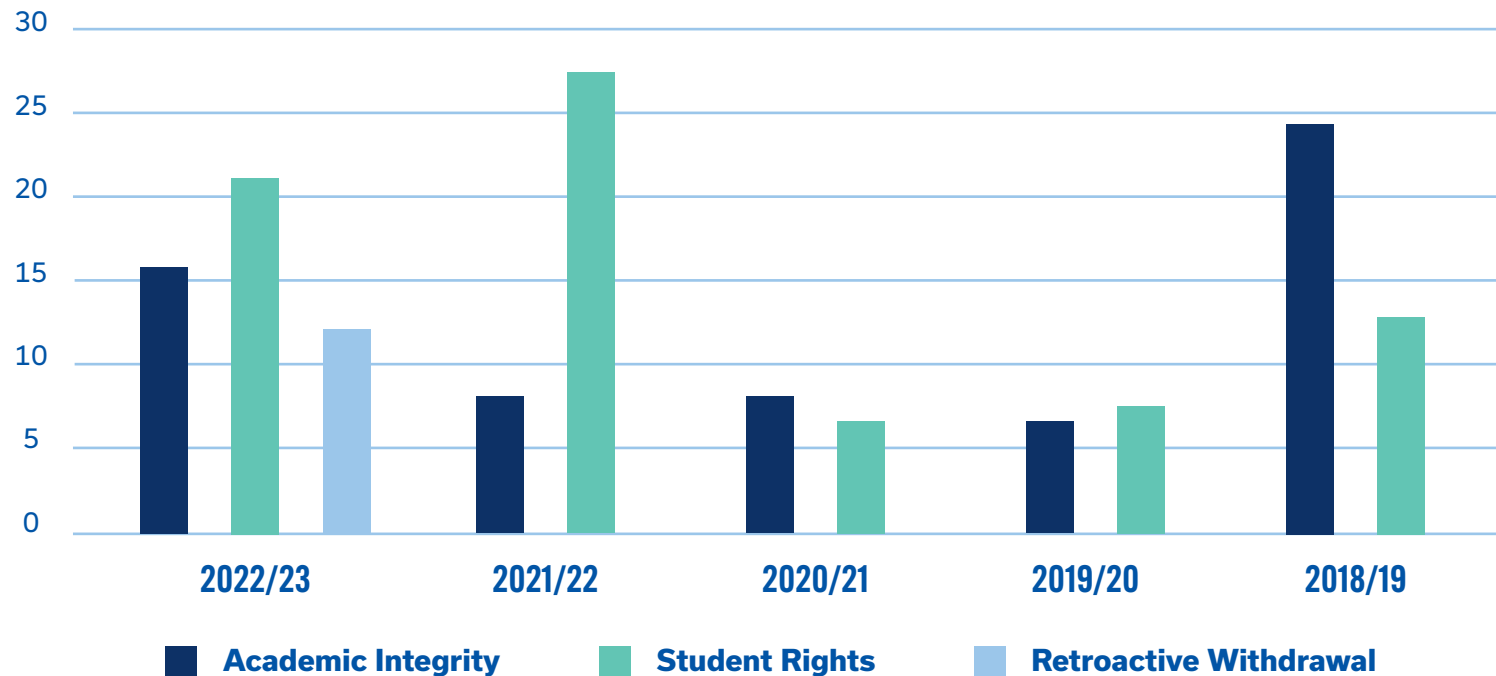


Academic offense determinations by student classification





## CASES FORWARDED TO THE UNIVERSITY APPEALS BOARD



Cases involving academic offenses that students wish to appeal and issues involving students' rights that cannot be resolved by Academic Ombud Services are forwarded to the University Appeals Board.





Academic Ombud Services | University of Kentucky | 109 Bradley Hall  
| 545 Rose Street | Lexington, Kentucky 40506-0058 | 859-257-3737  
| [ombud@uky.edu](mailto:ombud@uky.edu) | [www.uky.edu/ombud](http://www.uky.edu/ombud)

Academic Ombud Services is committed to a policy of providing opportunities to people regardless of economic or social status and will not discriminate on the basis of race, color, ethnic origin, national origin, creed, religion, political belief, sex, sexual orientation, gender identity, gender expression, pregnancy, marital status, genetic information, age, veteran status, or physical or mental disability.